

cruise
ESTATE AGENTS



OFFERS OVER

£89,000

King Street
Larkhall, ML9 3EQ

PROPERTY SUMMARY

Situated within the heart of Stonehouse conveniently close to local amenities and the 3c bus stop to Glasgow is this deceptively spacious, three-bedroom, traditional, upper flat. Stylishly presented and well-maintained by the current owner this lovely property with generous accommodation and substantial gardens to the rear is sure to be popular with a broad range of buyers.

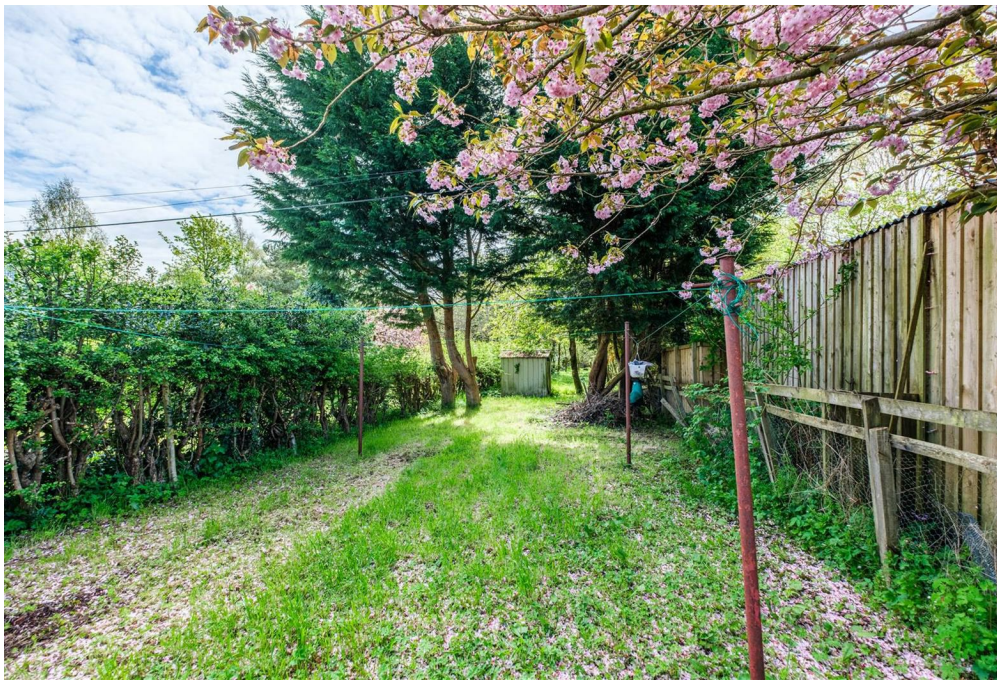
The versatile layout of accommodation comprises; entrance hall and staircase, reception hallway with excellent storage, spacious front facing lounge with recently replaced bay window, fitted kitchen with oven, hob, and hood, double bedroom/dining room, recently fitted, modern three-piece bathroom with over-bath shower, and a further two double bedrooms both with useful fitted storage, the master bedroom with a pretty bay window.

This fantastic home further benefits from gas central heating and double glazing. With some hard work and vision, the substantial rear gardens belonging to the property offer a purchaser a wonderful opportunity to cultivate this generous space into something really special.

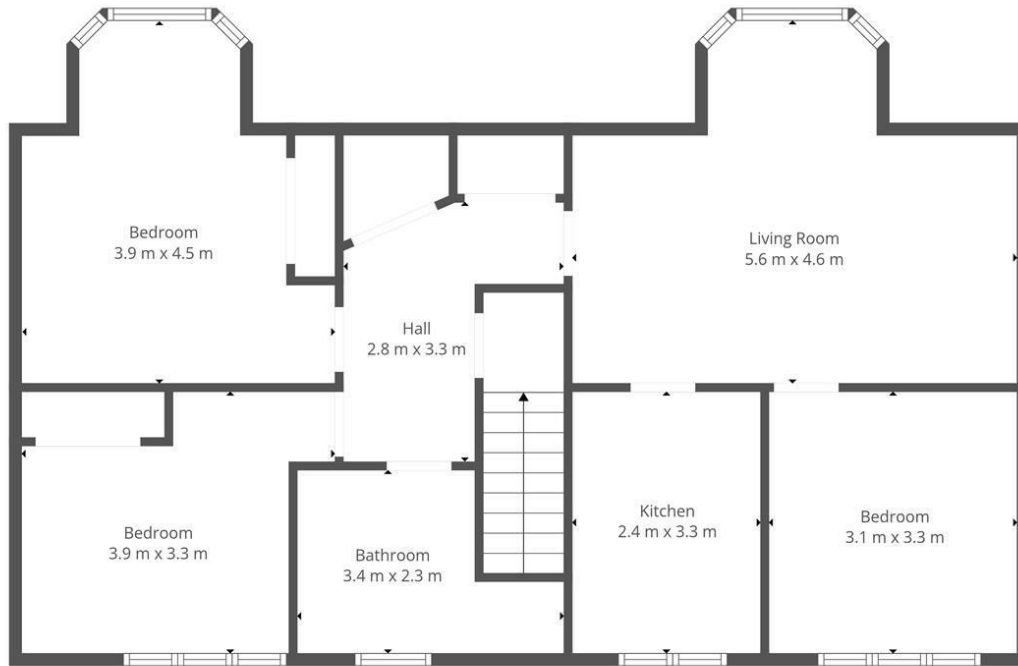
3



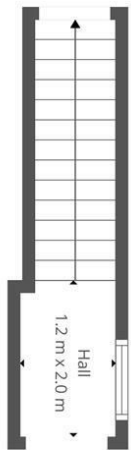








1st Floor



Ground Floor



This Floorplan Is Intended To Give An Indication Of The Layout Only.

LOCAL AUTHORITY

South Lanarkshire

TENURE

Freehold

COUNCIL TAX BAND

A

VIEWINGS

By prior appointment only

Energy Efficiency Rating		Current	Potential
<i>Very energy efficient - lower running costs</i>			
(82 plus) A			
(81-81) B			
(69-80) C		77	80
(55-68) D			
(39-54) E			
(21-38) F			
(1-20) G			
<i>Not energy efficient - higher running costs</i>			
Scotland		EU Directive 2002/91/EC	

Agents Note: Whilst every care has been taken to prepare these particulars, they are for guidance purposes only. All measurements are approximate and are for general guidance purposes only and whilst every care has been taken to ensure their accuracy, they should not be relied upon and potential buyers/tenants are advised to recheck the measurements



OFFICE ADDRESS
 9 Townhead Street
 Strathaven
 ML10 6AB

OFFICE DETAILS
 01357 510088
 judithmcgill@cruive-estateagents.co.uk